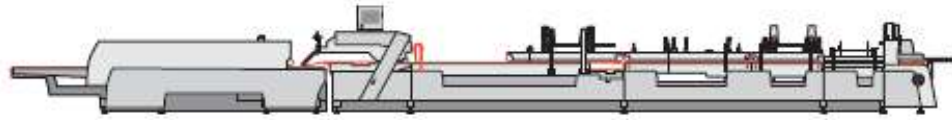


# MK Masterwork

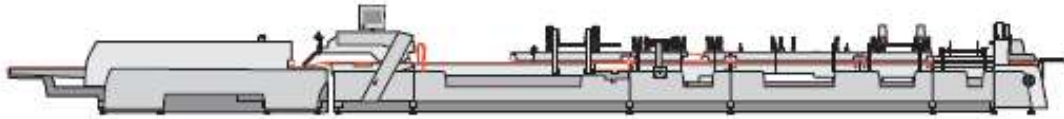
## MK Diana X 115-2

### Version A, Basic machine



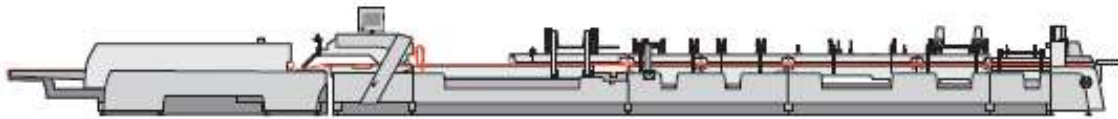
Compression and delivery section ♦ Transfer station ♦ Folding station ♦ Prefolder ♦ Blank alignment module ♦ Feeder

### Version B, Basic machine



Compression and delivery section ♦ Transfer station ♦ Folding station ♦ Lockbottom module ♦ Prefolder ♦ Blank alignment module ♦ Feeder

### Version C, Basic machine



Compression and delivery section ♦ Transfer station ♦ Folding station ♦ Collapsible box module ♦ Prefolder ♦ Blank alignment module ♦ Feeder

### Version CC, Basic machine

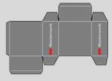





Compression and delivery section ♦ Transfer station ♦ Folding station ♦ Lockbottom module ♦ Collapsible box module ♦ Prefolder ♦ Blank alignment module ♦ Feeder

### Version X, (Diana X 115-2)

Free machine configuration.

# MK Masterwork

Machine versions:				
MK Diana X 115-2 A	●			
MK Diana X 115-2 B	●	●		
MK Diana X 115-2 C	●	●	●	○
MK Diana X 115-2 CC	●	●	●	○

● = Standard    ○ = Option

Basic data:	DX115-2A	DX115-2B	DX115-2C	DX115-2CC
Length, basic machine:	16,2 m	18 m	19 m	20,6 m
Width, basic machine:	2,2 m	2,2 m	2,75 m	2,75 m
Machine speed:	650 m/min*	650 m/min*	650 m/min*	650 m/min*

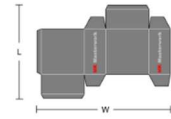
Material	Folding boxboard (g/m <sup>2</sup> )	Corrugated board
Folding cartons	200 – 900	N-, F-, E-, B-flute
Lockbottom cartons	200 – 900	N-, F-, E-, B-flute
Collapsible boxes	200 – 900	N-, F-, E-, B-flute
Double-wall cartons	200 – 900	N-, F-, E-, B-flute

# MK Masterwork

## Carton types:

Straightline folding cartons	W	L (max.)
MK Diana X 115-2	*75 – 1150 mm	900 mm

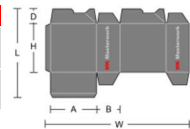
\* 45 mm with miniature carton attachment



(as of Version B)

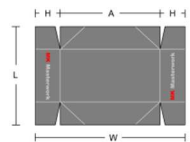
Lockbottom cartons	W	L	D	H (min.)	A (min.)	B (min.)
MK Diana X 115-2	*190 - 1150 mm	1100 mm	30 – 200 mm	50 mm	40 mm	40 mm

\* 146 mm with miniature carton attachment for lock bottom cartons



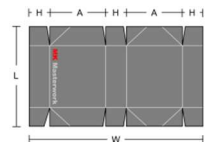
(as of Version C)

4-corner collapsible boxes	W	L	A	H
MK Diana X 115-2	120 – 1150 mm	110 - 1100 mm	80 – 900 mm	20 – 200 mm



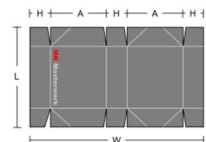
(Option to Version C)

6-Punkt-Aufrichteschachteln	W	L	A	H
MK Diana X 115-2	270 – 1150 mm	130 - 830 mm	90 – 460 mm	30 – 164 mm



(Option to Version CC)

6-corner collapsible boxes	W	L	A	H
MK Diana X 115-2	250 – 1150 mm	130 - 1100 mm	80 – 460 mm	30 – 164 mm



Double-wall cartons	F	L	Z (min.)	W (max.)	E (min.)
MK Diana X 115-2	90 – 900 mm	120 – 900 mm	105 mm	1150	15

Note: max. machine speed 300 m/min with upper gluing unit

